

**10<sup>th</sup>**  
year  
ANNIVERSARY

NEW FEATURES

BENDER LINE  
&  
DISC FAMILY

 **DISC ROLLER**  
PERFECT BENDER



# BENDER LINE & DISC FAMILY UPDATE

## WHAT'S NEW?



NEW FEATURE



RADIUS **0.7** mm  
REGULAR BENDING ROLL

- ALL BENDER MODELS HAVE REGULAR BENDING ROLL OF 0.7 mm RADIUS



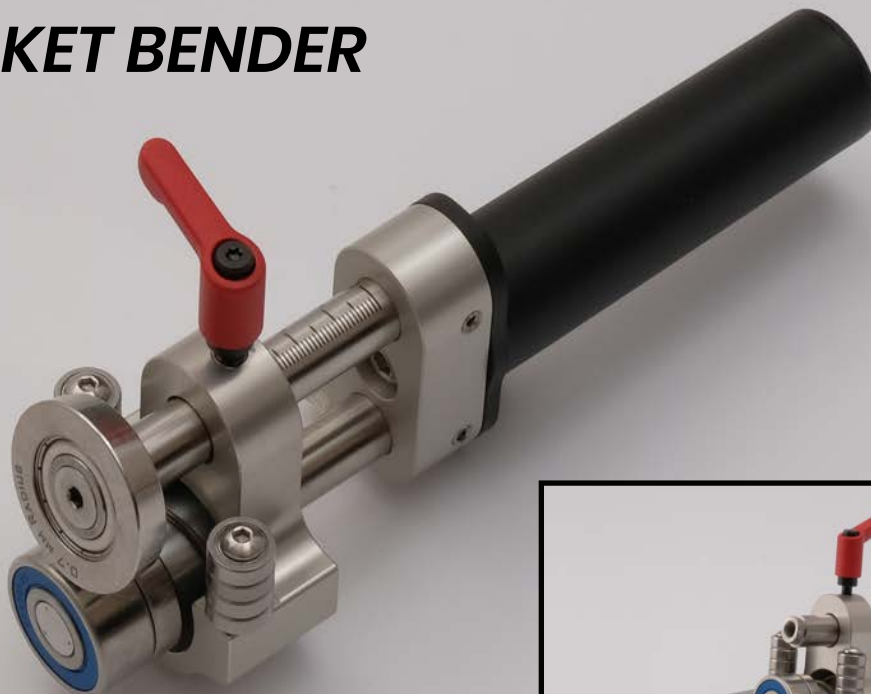
RADIUS **2** mm  
BENDING ROLL

- EASILY EXCHANGABLE BENDING ROLL TO 2.0 mm RADIUS WHICH IS BETTER SUITABLE FOR BENDING SOFT MATERIALS LIKE: ZINC, ALUMINIUM, COPPER ETC



- Placable at any position where you can bend metal from 90 ° to 180 °. By unscrewing the middle screw you can easily deattach the disc

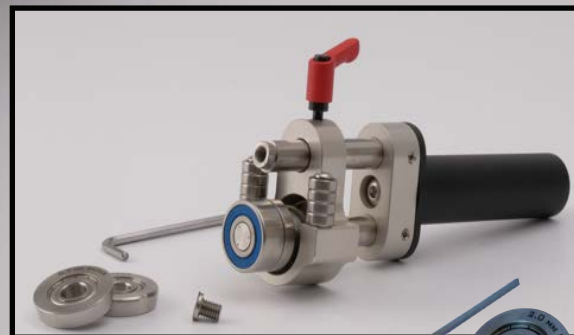
# POCKET BENDER



130

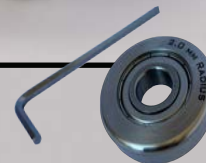
## POCKET BENDER

- BENDING TO 100 °
- INSERTION DEPTH: 20 - 50 MM
- MAX MATERIAL THICKNESS: 0.8 MM
- BENDING ROLL RADIUS 0.7 MM



9004 NEW FEATURE

- + BENDING ROLL RADIUS 2.0



**S LINE**



1010

**PERFECT BENDER S - 60**

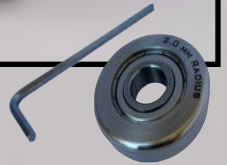
- BENDING TO 100 °
- INSERTION DEPTH: 5 - 60 MM
- MAX MATERIAL THICKNESS: 0.8 MM
- BENDING ROLL RADIUS 0.7 MM



9001

**NEW FEATURE**

- + BENDING ROLL RADIUS 2.0



1020

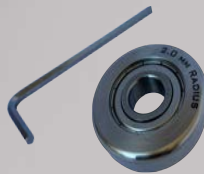
**PERFECT BENDER S - 100**

- BENDING TO 100 °
- INSERTION DEPTH: 5 - 100 MM
- MAX MATERIAL THICKNESS: 0.8 MM
- BENDING ROLL RADIUS 0.7 MM

9001

**NEW FEATURE**

- + BENDING ROLL RADIUS 2.0



1030

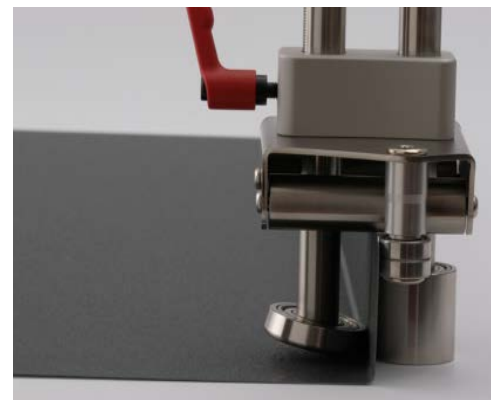
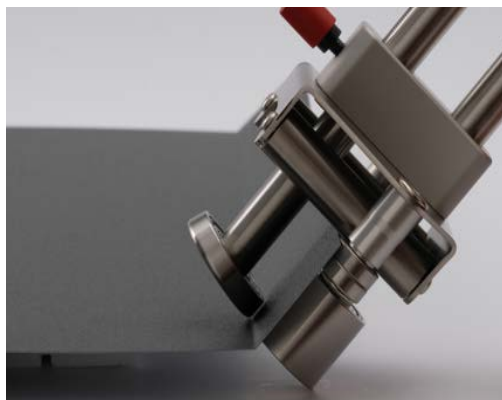
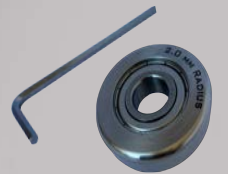
**PERFECT BENDER S - 150**

- BENDING TO 100 °
- INSERTION DEPTH: 5 - 150 MM
- MAX MATERIAL THICKNESS: 0.8 MM
- BENDING ROLL RADIUS 0.7 MM

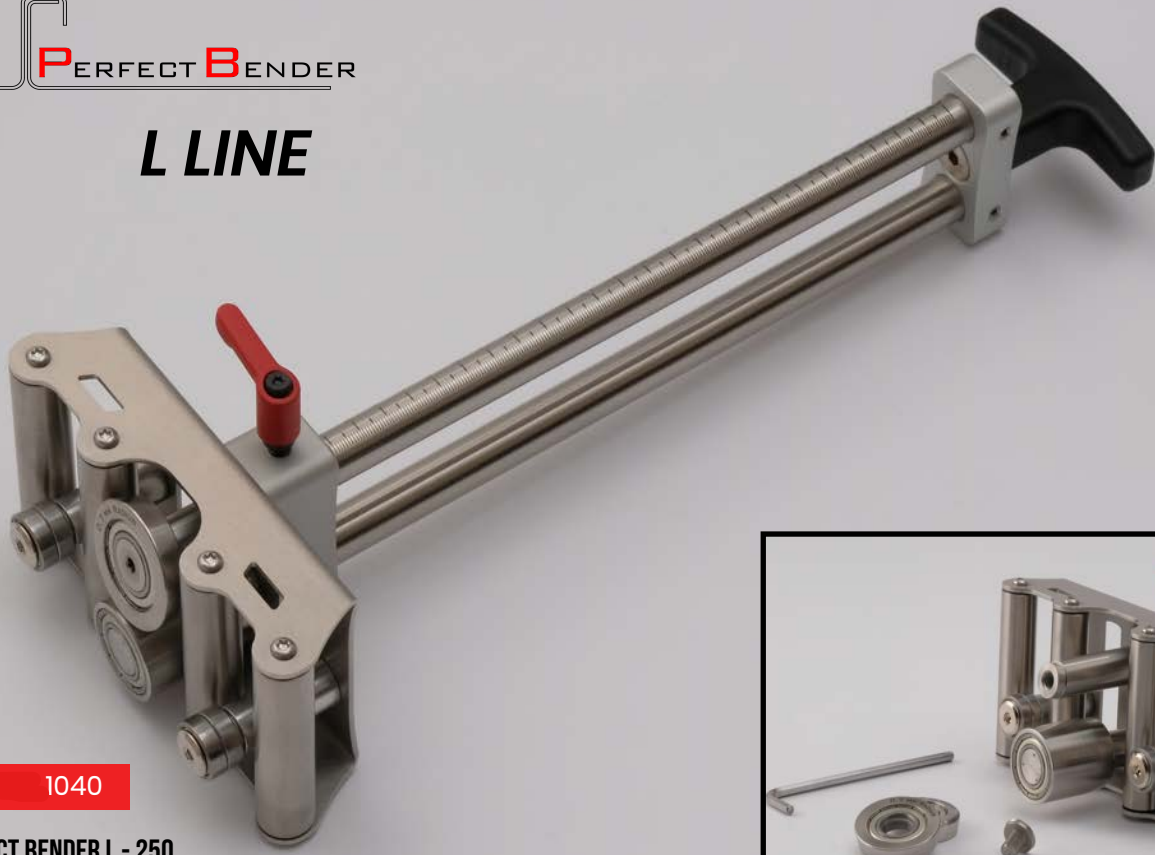
9001

**NEW FEATURE**

- + BENDING ROLL RADIUS 2.0



# L LINE



1040

## PERFECT BENDER L - 250

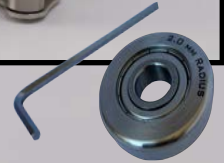
- BENDING TO 100 °
- INSERTION DEPTH: 5 - 250 MM
- MAX MATERIAL THICKNESS: 0.8 MM
- BENDING ROLL RADIUS 0.7 MM



9001

NEW FEATURE

- + BENDING ROLL RADIUS 2.0



1050

## PERFECT BENDER L - 350

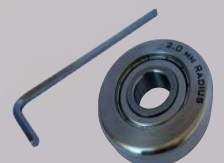
- BENDING TO 100 °
- INSERTION DEPTH: 5 - 250 MM
- MAX MATERIAL THICKNESS: 0.8 MM
- BENDING ROLL RADIUS 0.7 MM

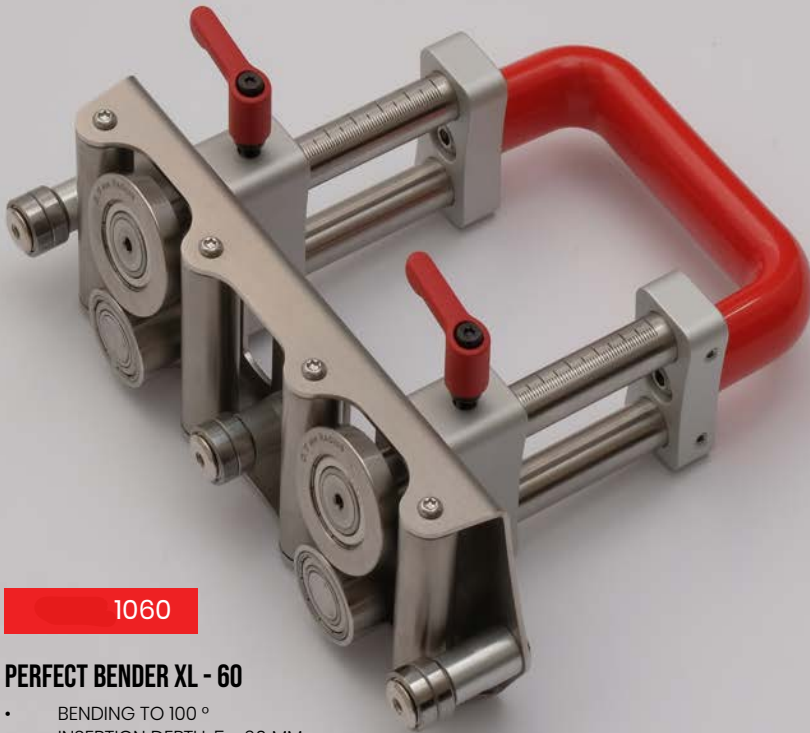


3001

NEW FEATURE

- + BENDING ROLL RADIUS 2.0





**1060**

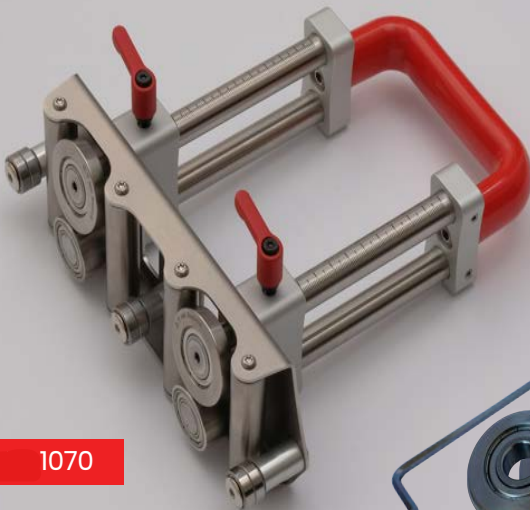
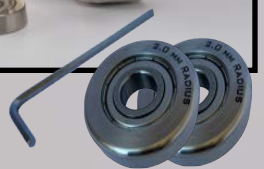
**PERFECT BENDER XL - 60**

- BENDING TO 100 °
- INSERTION DEPTH: 5 - 60 MM
- MAX MATERIAL THICKNESS: 0.8 MM
- BENDING ROLL RADIUS 0.7 MM



**9002 NEW FEATURE**

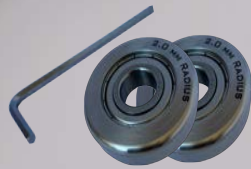
- + BENDING ROLL RADIUS 2.0



**1070**

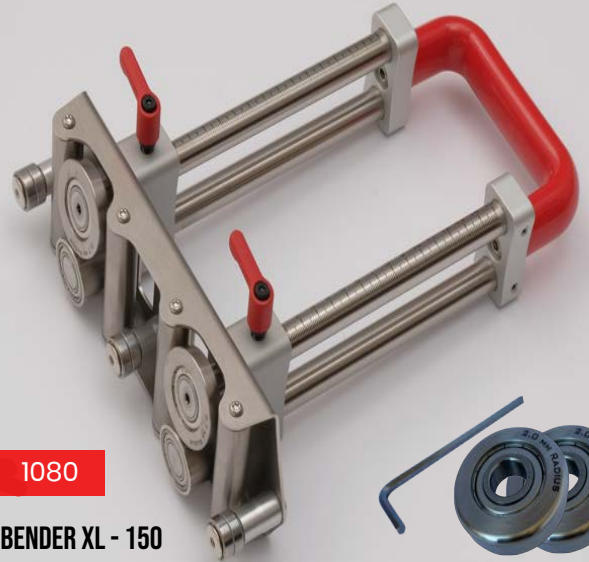
**PERFECT BENDER XL - 100**

- BENDING TO 100 °
- INSERTION DEPTH: 5 - 100 MM
- MAX MATERIAL THICKNESS: 0.8 MM
- BENDING ROLL RADIUS 0.7 MM



**9002 NEW FEATURE**

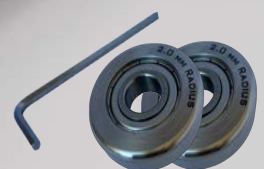
- + BENDING ROLL RADIUS 2.0



**1080**

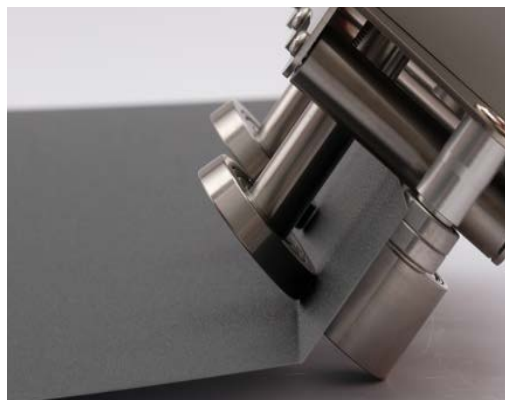
**PERFECT BENDER XL - 150**

- BENDING TO 100 °
- INSERTION DEPTH: 5 - 150 MM
- MAX MATERIAL THICKNESS: 0.8 MM
- BENDING ROLL RADIUS 0.7 MM



**9002 NEW FEATURE**

- + BENDING ROLL RADIUS 2.0





- 1090

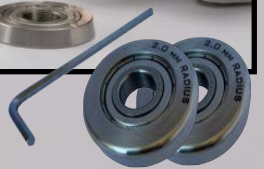
### PERFECT BENDER XL - 250

- BENDING TO 100 °
- INSERTION DEPTH: 5 - 250 MM
- MAX MATERIAL THICKNESS: 0.8 MM
- BENDING ROLL RADIUS 0.7 MM



9002 NEW FEATURE

- + BENDING ROLL RADIUS 2.0



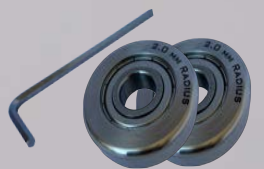
1100

### PERFECT BENDER XL - 350

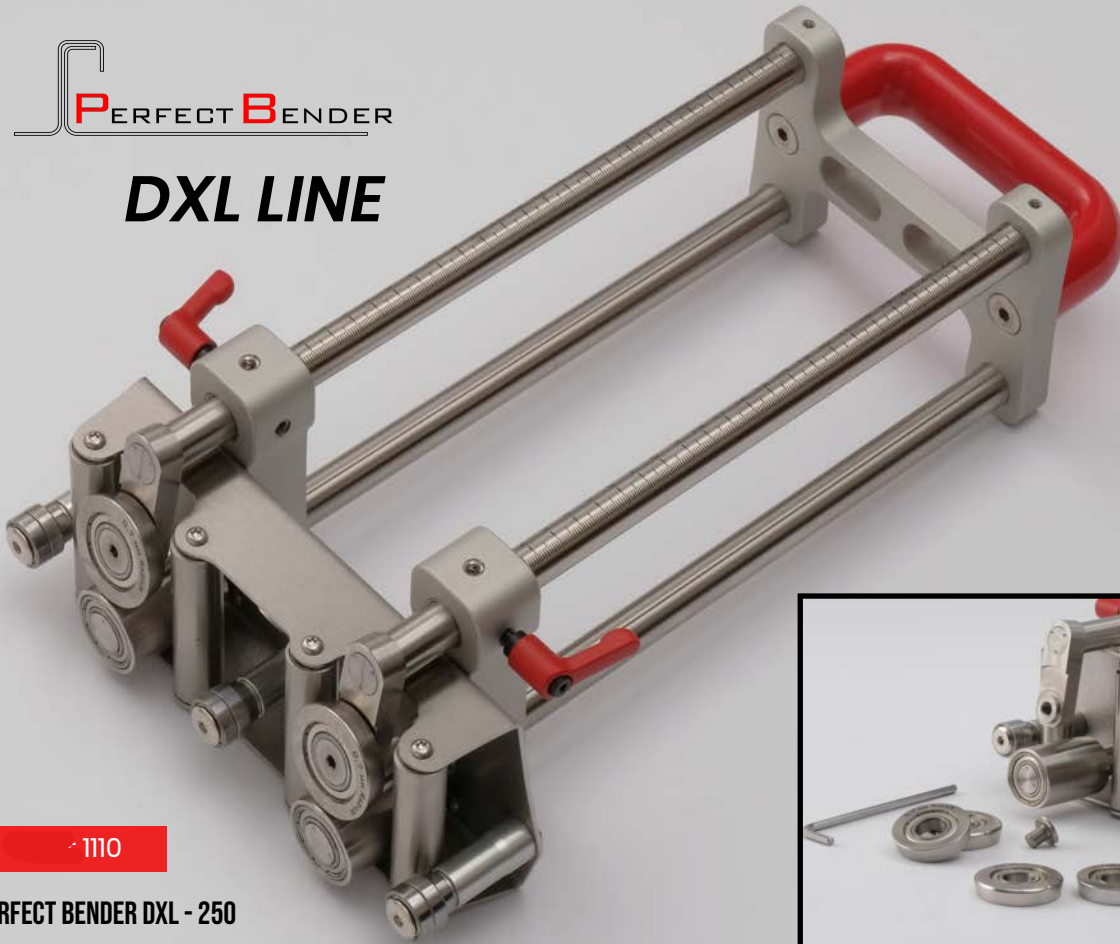
- BENDING TO 100 °
- INSERTION DEPTH: 5 - 250 MM
- MAX MATERIAL THICKNESS: 0.8 MM
- BENDING ROLL RADIUS 0.7 MM

3002 NEW FEATURE

- + BENDING ROLL RADIUS 2.0



# DXL LINE



1110

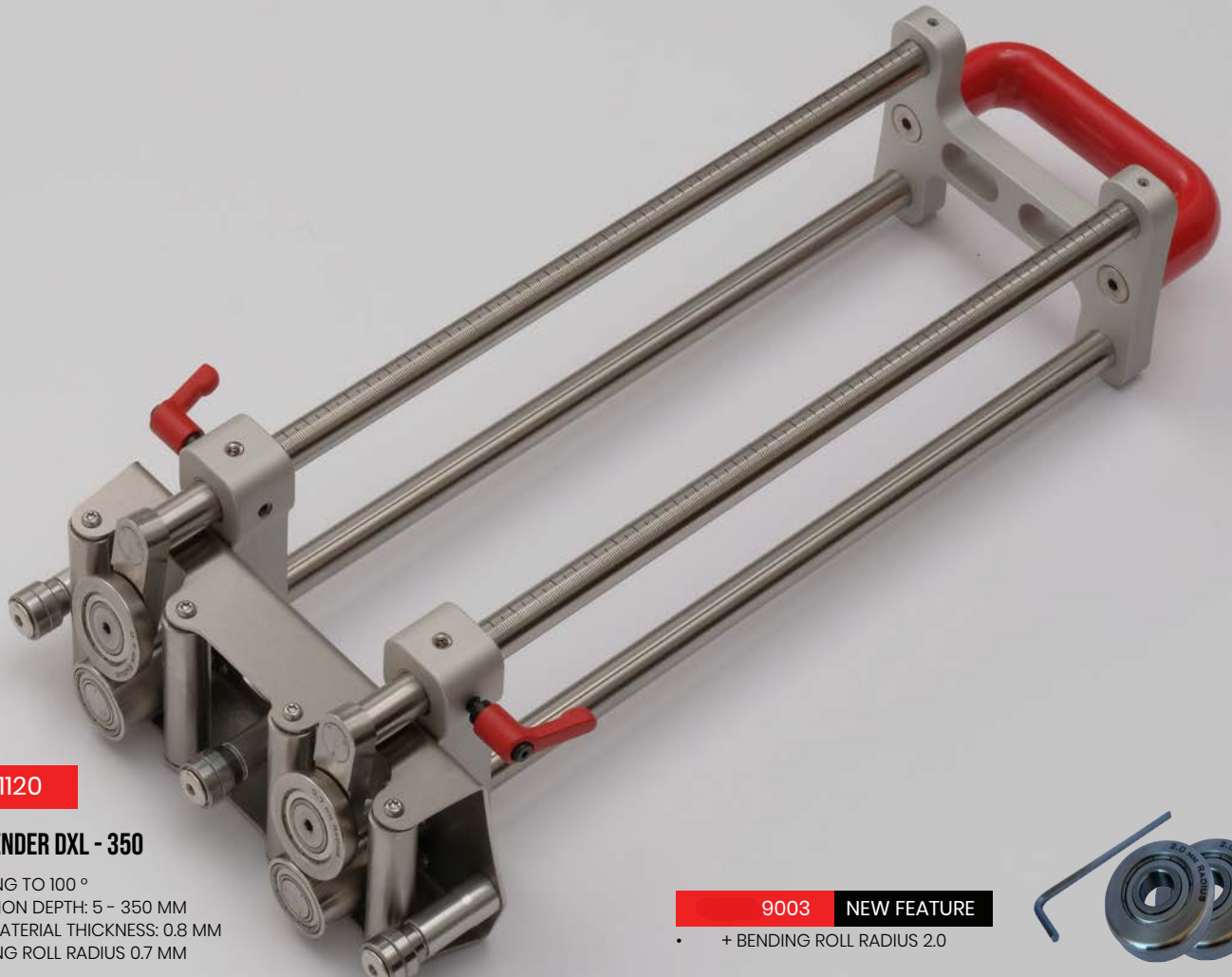
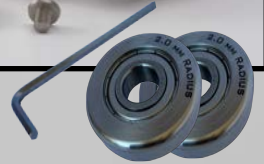
## PERFECT BENDER DXL - 250

- BENDING TO 100 °
- INSERTION DEPTH: 5 - 250 MM
- MAX MATERIAL THICKNESS: 0.8 MM
- BENDING ROLL RADIUS 0.7 MM



9003 NEW FEATURE

- + BENDING ROLL RADIUS 2.0



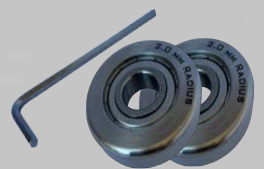
1120

## PERFECT BENDER DXL - 350

- BENDING TO 100 °
- INSERTION DEPTH: 5 - 350 MM
- MAX MATERIAL THICKNESS: 0.8 MM
- BENDING ROLL RADIUS 0.7 MM

9003 NEW FEATURE

- + BENDING ROLL RADIUS 2.0







**NEW FEATURE**

- + REMOVABLE DISC
- + FAMILY IS NOW ~30% LIGHTER



**2010**

**DISC BENDER S**

- BENDING FROM 90° - 180°
- INSERTION DEPTH: 8 - 28 MM
- MAX MATERIAL THICKNESS: 0.8 MM
- REMOVABLE DISC
- 30% LIGHTER



**NEW FEATURE**

- + REMOVABLE DISC
- + FAMILY IS NOW ~30% LIGHTER



**2020**

**DISC BENDER S DOUBLE**

- BENDING FROM 90° - 180°
- INSERTION DEPTH: 8 - 28 MM
- MAX MATERIAL THICKNESS: 0.8 MM
- REMOVABLE DISC
- 30% LIGHTER



**NEW FEATURE**

- + REMOVABLE DISC
- + FAMILY IS NOW ~30% LIGHTER

**2030**

**DISC BENDER L**

- BENDING FROM 90° - 180°
- INSERTION DEPTH: 8 - 43MM
- MAX MATERIAL THICKNESS: 0.8 MM
- REMOVABLE DISC
- 30% LIGHTER



**NEW FEATURE**

- + REMOVABLE DISC
- + FAMILY IS NOW ~30% LIGHTER

**2040**

**DISC BENDER L DOUBLE**

- BENDING FROM 90° - 180°
- INSERTION DEPTH: 8 - 43 MM
- MAX MATERIAL THICKNESS: 0.8 MM
- REMOVABLE DISC
- 30% LIGHTER

